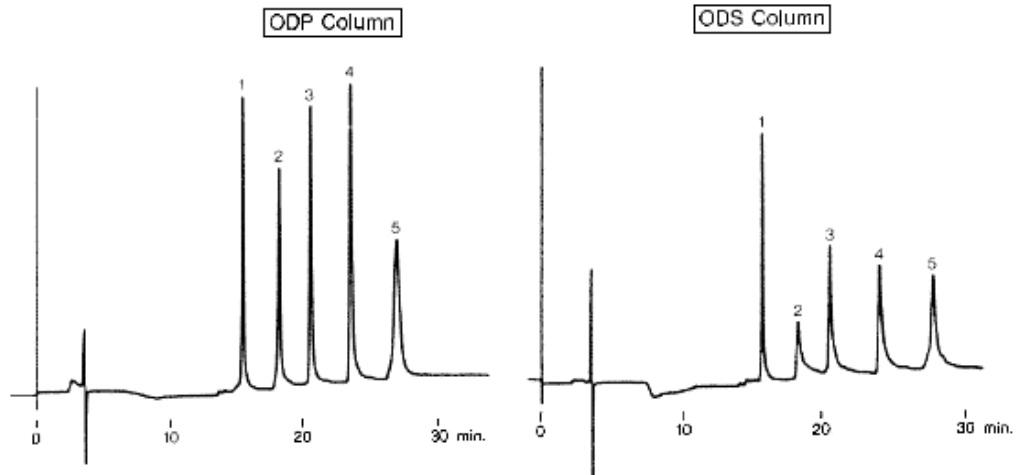


	(MW)
1. Ribonuclease	(13,700)
2. Cytochrome c	(12,400)
3. Lysozyme	(14,300)
4. Chymotrypsinogen A	(25,700)
5. Ovalbumin	(45,000)



**Sample :**

1. Ribonuclease, 2. Cytochrome c, 3. Lysozyme, 4. Chymotrypsinogen A, 5. Ovalbumin

Columns : Shodex Asahipak ODP-50 6D(6.0mmID\*150mm), ODS(6.0mmID\*150mm)  
 Eluent : 0.05% TFA aq./CH<sub>3</sub>CN  
 Linear gradient: 0 to 30min, 90/10 to 40/60  
 Flow rate : 1.0mL/min  
 Detector : UV(280nm)  
 Column temp. : 30°C